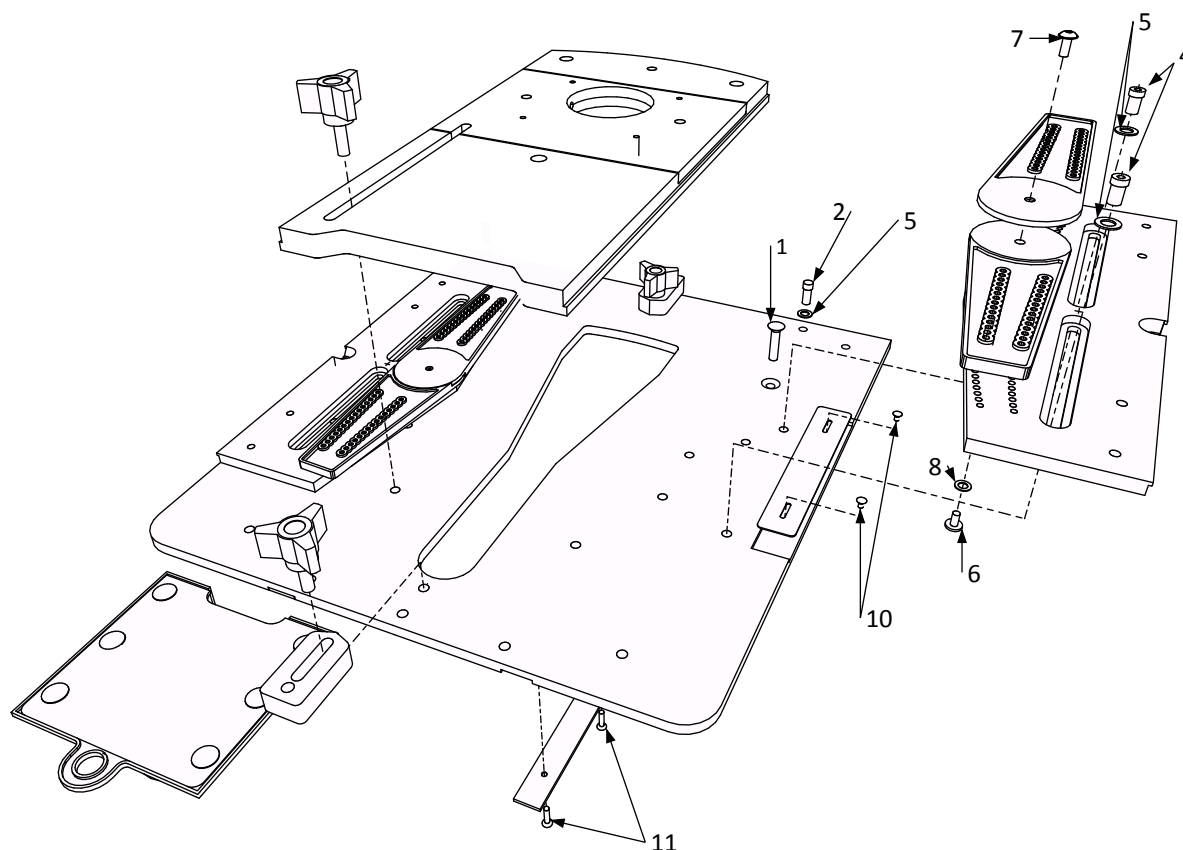


Exploded Views and Hardware Lists



Base Plate with Variable Angle Guides

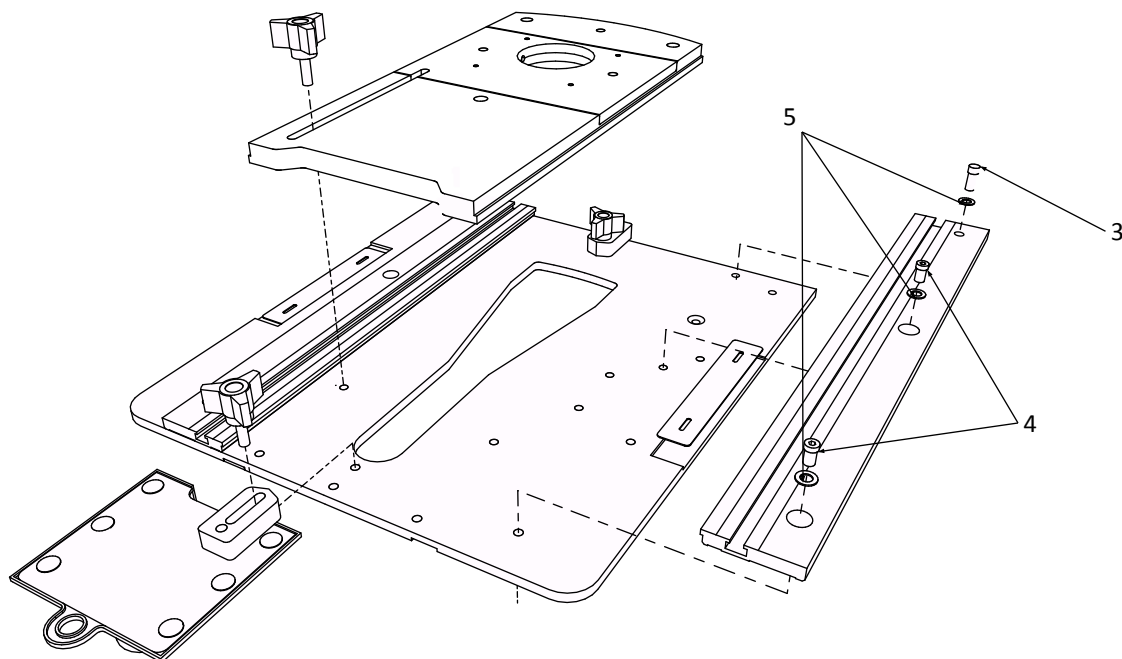


Contents of Router Boss Base Machine Fastener Bag

1	2	1/4-20 x 1-1/2" Flat Socket Head Screw	Attach base plate to channel front
2	2	1/4-20 x 1" Socket Head Screw	Attach base plate to channel rear
3	2	1/4-20 x 1-3/4" Socket Head Screw	Attach base plate, alum rails, riser plate to channel
4	4	1/4-20 x 3/8" Low Head Socket Screw	Attach guide rails to base plate
5	6	1/4" L Size .468" OD Flat Washer	Washers with above socket screws
6	2	8-32 x 3/8" Binding Post Barrel	Center connector for variable angle guides
7	2	8-32 x 3/8" Button Head Screw	Screw for binding post barrel
8	2	#12 Internal Tooth Lock Washer	Lock washer in bottom of binding post barrel
9	10	1/8" Steel Locator Pin (2 extra provided)	Set angle in variable angle guide rails
10	10	4-40 x 1/4" Flat Head Socket Screw	Attach rules to base plate & front channel
11	6	6-32 x 1/4" Flat Head Socket Screw	Attach dust port metal strips under base plate
12	2	1/4-20 x 1-1/4" Flat Socket Head Screw	Attach fixed fence to sliding bar
13	4	10-32 x 3/8" Nylon Thumb Screw	Attach cursors to sliding bar t-tracks
14	4	10-32 Oval Nut	Nut with thumb screw above
15	4	1/4-20 Oval Nut	Extras for user jigs using t-tracks
16	4	5mm Oval Nut	Extras for user jigs using t-tracks
17	3	M6 x 16 Flange Button Head Screw	Attach router to router plate
18	2	1" x 4" VHB Tape	Attach router to router plate alternative



Base Plate with Aluminum Guide Rails



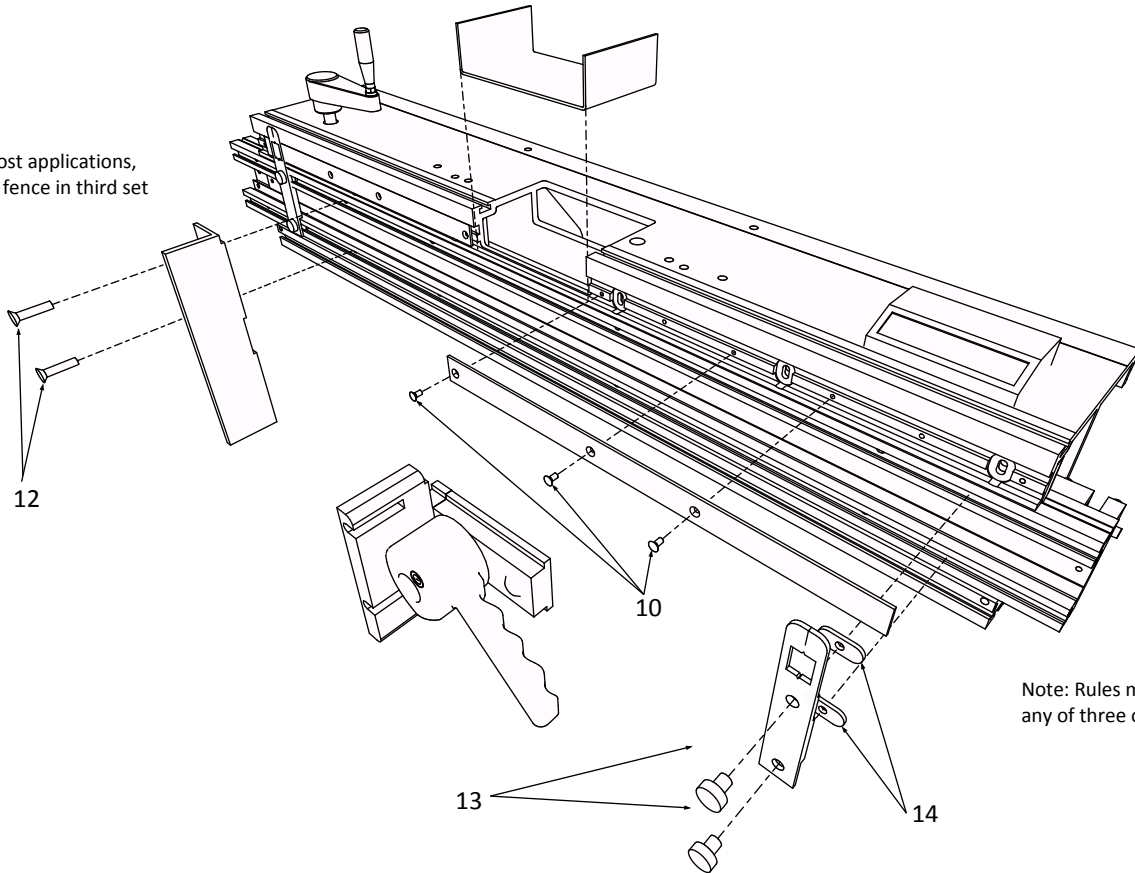
Contents of Router Boss Base Machine Fastener Bag

1	2	1/4-20 x 1-1/2" Flat Socket Head Screw	Attach base plate to channel front
2	2	1/4-20 x 1" Socket Head Screw	Attach base plate to channel rear
3	2	1/4-20 x 1-3/4" Socket Head Screw	Attach base plate, alum rails, riser plate to channel
4	4	1/4-20 x 3/8" Low Head Socket Screw	Attach guide rails to base plate
5	6	1/4" L Size .468" OD Flat Washer	Washers with above socket screws
6	2	8-32 x 3/8" Binding Post Barrel	Center connector for variable angle guides
7	2	8-32 x 3/8" Button Head Screw	Screw for binding post barrel
8	2	#12 Internal Tooth Lock Washer	Lock washer in bottom of binding post barrel
9	10	1/8" Steel Locator Pin (2 extra provided)	Set angle in variable angle guide rails
10	10	4-40 x 1/4" Flat Head Socket Screw	Attach rules to base plate & front channel
11	6	6-32 x 1/4" Flat Head Socket Screw	Attach dust port metal strips under base plate
12	2	1/4-20 x 1-1/4" Flat Socket Head Screw	Attach fixed fence to sliding bar
13	4	10-32 x 3/8" Nylon Thumb Screw	Attach cursors to sliding bar t-tracks
14	4	10-32 Oval Nut	Nut with thumb screw above
15	4	1/4-20 Oval Nut	Extras for user jigs using t-tracks
16	4	5mm Oval Nut	Extras for user jigs using t-tracks
17	3	M6 x 16 Flange Button Head Screw	Attach router to router plate
18	2	1" x 4" VHB Tape	Attach router to router plate alternative



Box Beam

Note: For most applications, mount fixed fence in third set of holes.



Note: Rules may be mounted in any of three optional locations

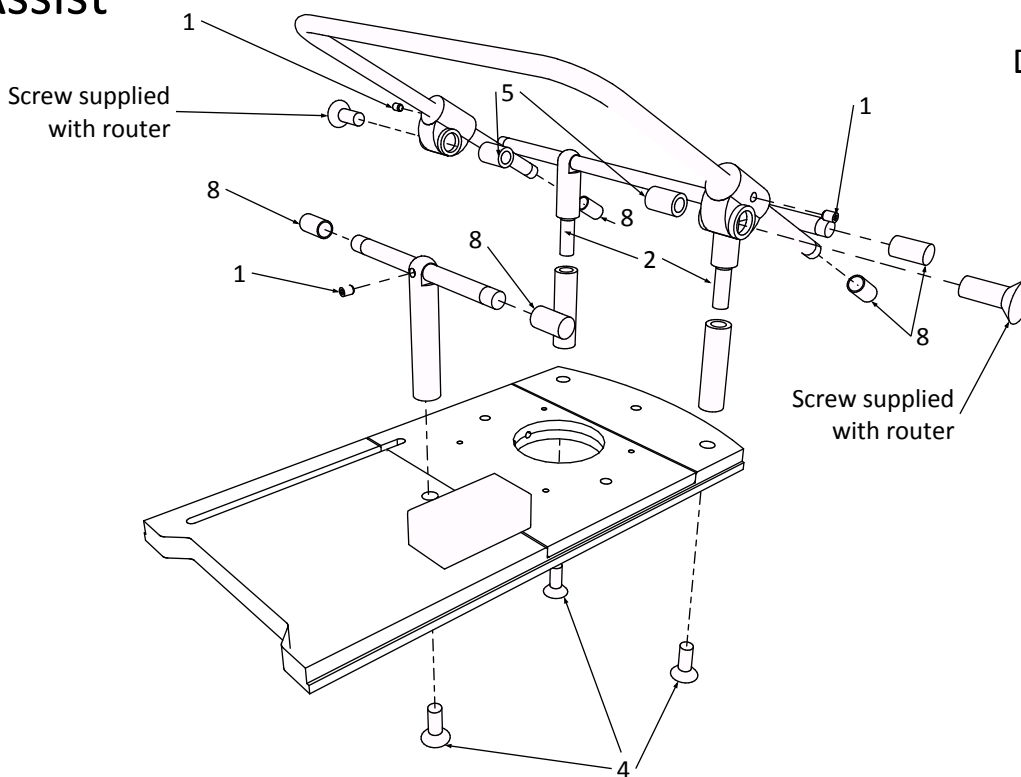
Contents of Router Boss Base Machine Fastener Bag

1	2	1/4-20 x 1-1/2" Flat Socket Head Screw	Attach base plate to channel front
2	2	1/4-20 x 1" Socket Head Screw	Attach base plate to channel rear
3	2	1/4-20 x 1-3/4" Socket Head Screw	Attach base plate, alum rails, riser plate to channel
4	4	1/4-20 x 3/8" Low Head Socket Screw	Attach guide rails to base plate
5	6	1/4" L Size .468" OD Flat Washer	Washers with above socket screws
6	2	8-32 x 3/8" Binding Post Barrel	Center connector for variable angle guides
7	2	8-32 x 3/8" Button Head Screw	Screw for binding post barrel
8	2	#12 Internal Tooth Lock Washer	Lock washer in bottom of binding post barrel
9	10	1/8" Steel Locator Pin (2 extra provided)	Set angle in variable angle guide rails
10	10	4-40 x 1/4" Flat Head Socket Screw	Attach rules to base plate & front channel
11	6	6-32 x 1/4" Flat Head Socket Screw	Attach dust port metal strips under base plate
12	2	1/4-20 x 1-1/4" Flat Socket Head Screw	Attach fixed fence to sliding bar
13	4	10-32 x 3/8" Nylon Thumb Screw	Attach cursors to sliding bar t-tracks
14	4	10-32 Oval Nut	Nut with thumb screw above
15	4	1/4-20 Oval Nut	Extras for user jigs using t-tracks
16	4	5mm Oval Nut	Extras for user jigs using t-tracks
17	3	M6 x 16 Flange Button Head Screw	Attach router to router plate
18	2	1" x 4" VHB Tape	Attach router to router plate alternative



Plunge Assist

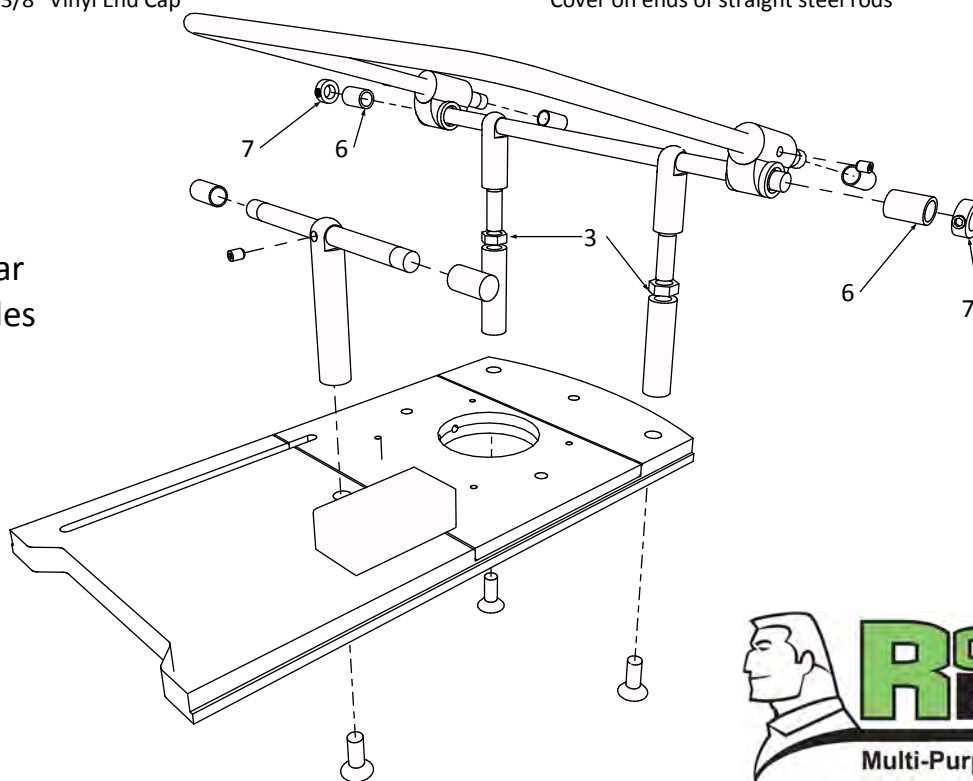
For DeWalt
DW625 Router



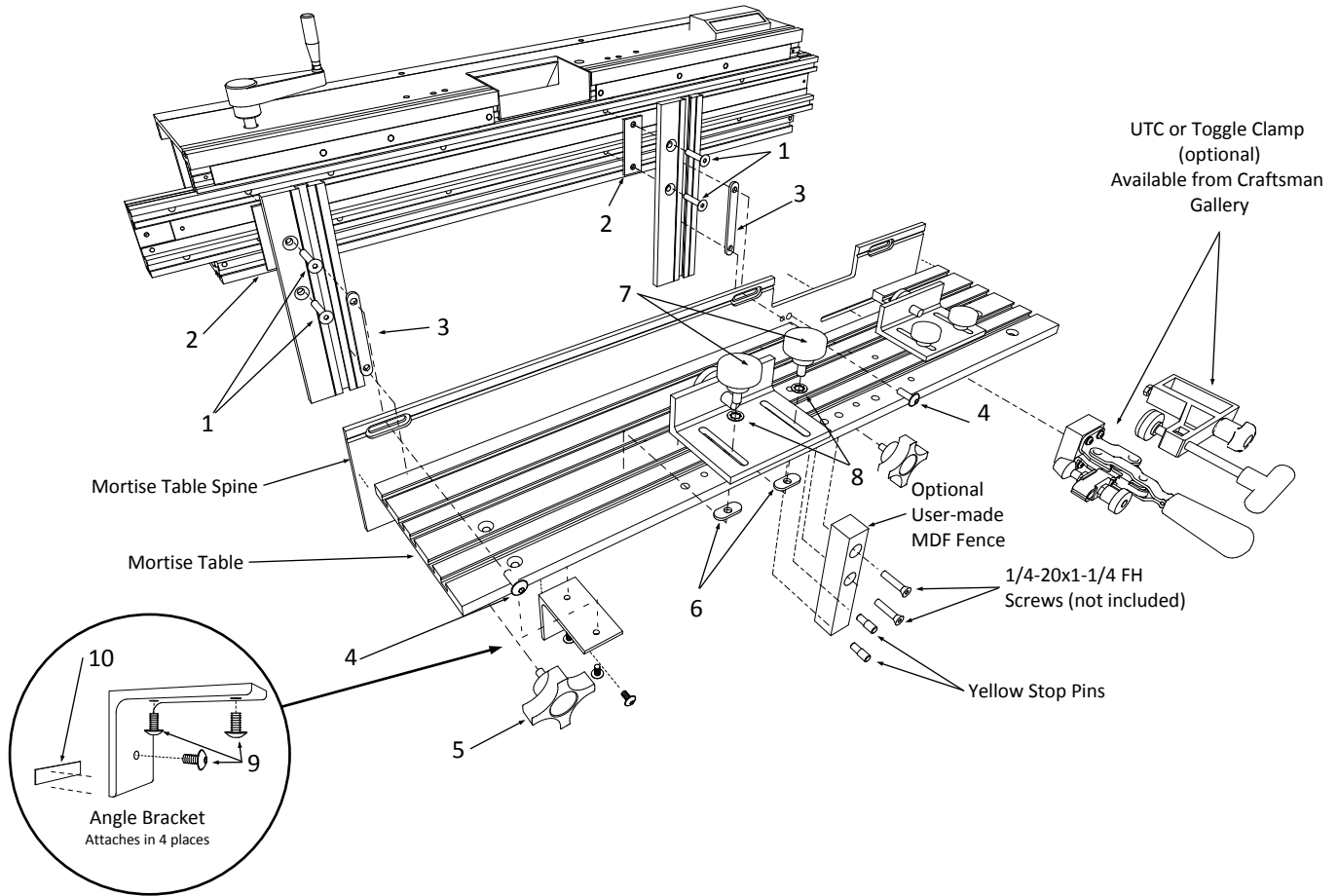
Contents of Router Boss Plunge Assist Kit Fastener Bag

1	5	10-32 x 1/4" Socket Head Set Screw	Secure rods in standoffs and sleeve adapter
2	2	3/8-16 x 1" Threaded Rod	Join top/bottom of rear standoff
3	4	3/8-16 Hex Jam Nut	Spacer on threaded rod to extend rear standoffs
4	3	3/8-16 x 1" Flat Socket Head Screw	Attach standoffs to laser router plate
5	2	5/16" Sleeve Bearing 1/2" OD, 3/4" Length	Bearing in sleeve adapter for DeWalt 625
6	2	3/8" Sleeve Bearing 1/2" OD, 3/4" Length	Bearing in sleeve adapter for other than DeWalt 625
7	2	3/8" Shaft Collar 3/4" OD, 3/8" Width	Position U-bar on rear rod for other than DeWalt 625
8	4	3/8" Vinyl End Cap	Cover on ends of straight steel rods

Mount for other
Routers with U-bar
over router handles

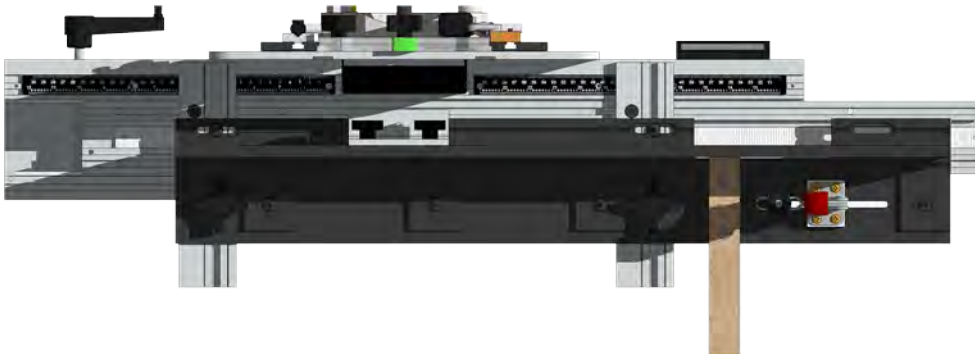


Mortise Table - Horizontal and Vertical Work Holder



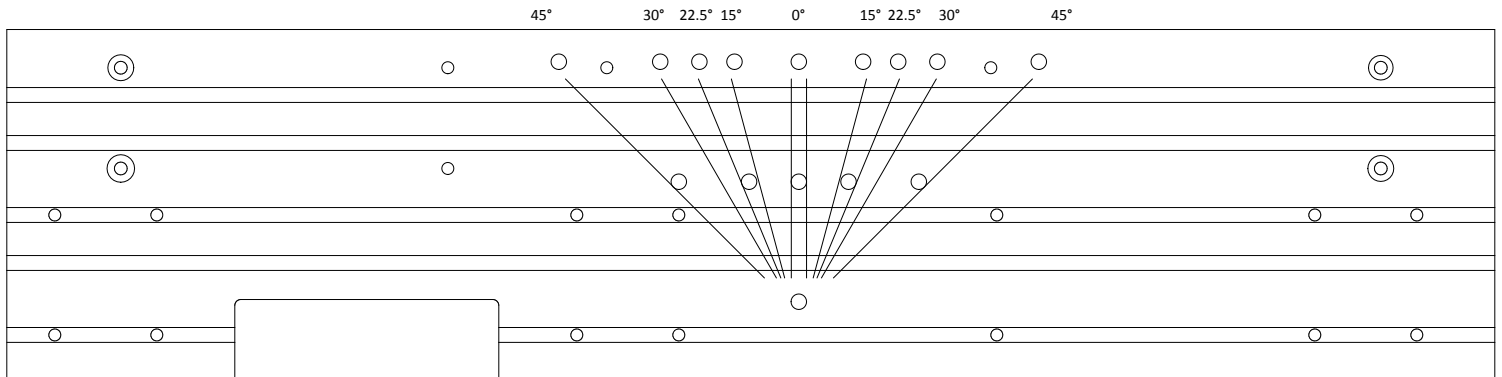
Contents of Router Boss Mortise Rail Fastener Bag

1	4	1/4-20 x 1-1/4" Flat Socket Head Screw	Attach Vertical Support Rail to Sliding Bar and MDF Fence to Spine
2	4	Aluminum Spacer Plate 1/8" Thick	Shim between Vertical Support Rail and Sliding Bar
3	2	1/4-20 T-track bar	Slides in T-track of Vertical Support Rails
4	2	1/4-20 x 3/8" Flange Button Head Screw	Attach Top of Spine to T-track Bar in Vertical Support Rails
5	2	Four-Arm Knob with 1/4-20 x 1/2" Stud	Attach Bottom of Spine to T-track Bar in Vertical Support Rails
6	4	1/4-20 Oval Nut	Attach Vise Clamps to Table T-track
7	4	Round Knob with 1/4-20 x 1/2" Stud	Attach Vise Clamps to Table T-track
8	4	1/4" Inside Tooth Lock Washer	Use on Vise Clamp Knobs
9	12	1/4-20 x 7-16" Socket Head Screws	Attach Angle Brackets to Spine and Table
10	12	Plastic Shims, 4 ea. ~1/32", ~1/64", ~1/128"	Fine tune parallelism of Table to Base Plate
			Also included
2		1/4-20 x 3/4" Flat Head Cap Screws	Attach Fixed Fence to Table
3		Yellow Angle Setting Stop Pins	

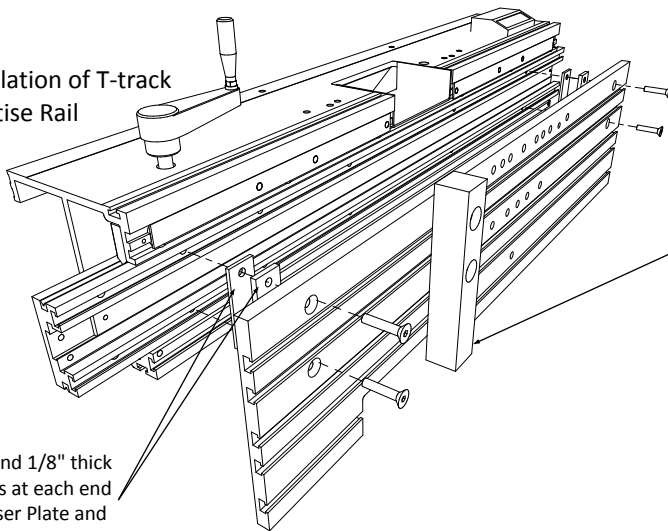


Mortise Table - Vertical Mounting

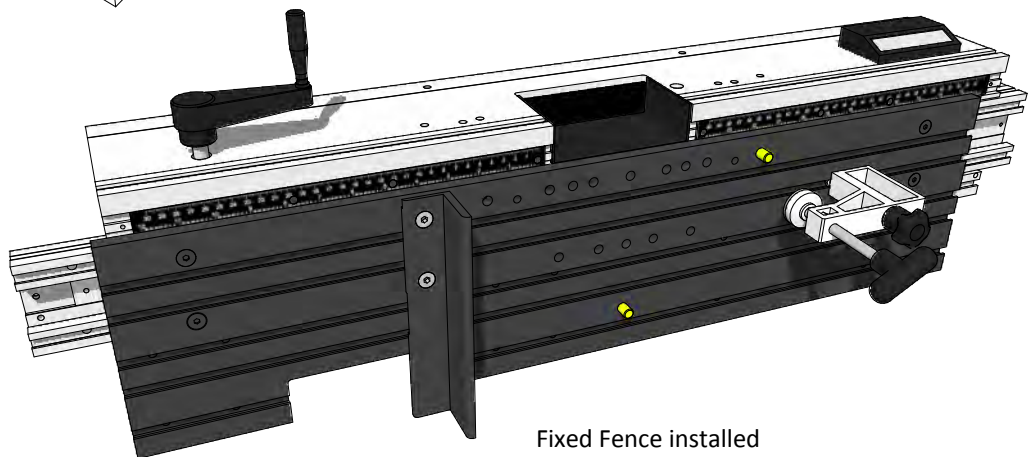
Angle settings
Insert yellow stop pins into holes as indicated for desired angles



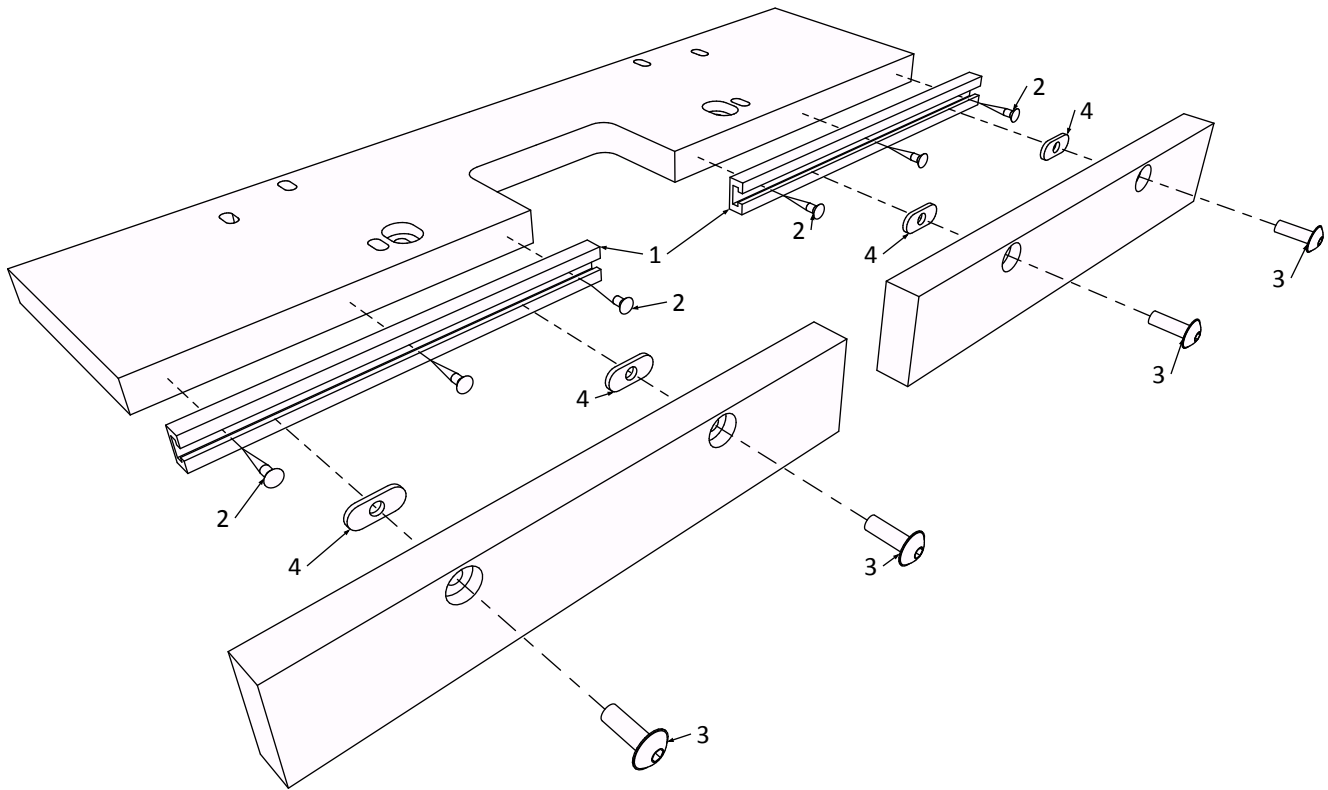
Alternate installation of T-track portion of Mortise Rail



Insert 1/4" and 1/8" thick spacer plates at each end when using Riser Plate and Router Table Fences.



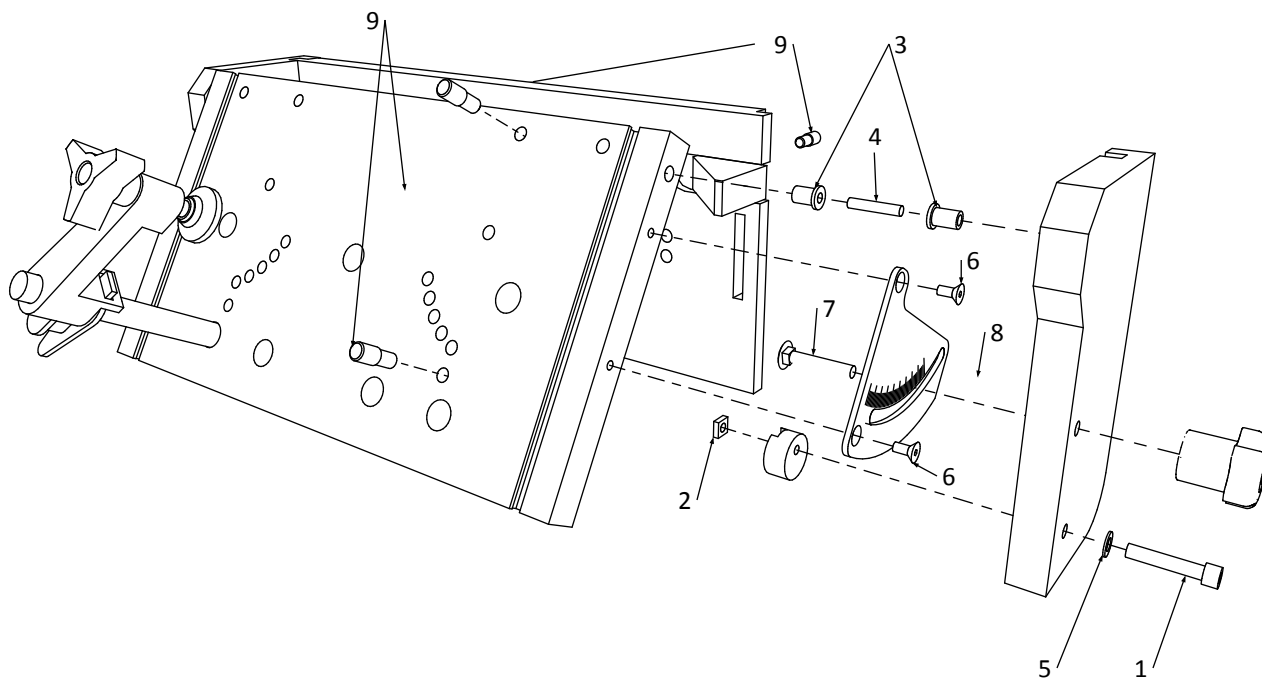
Router Table



Contents of Router Boss Router Table Kit Fastener Bag

1	2	1/4-20 T-track, 9" Length, 1/2" projection	T-track on front edge of riser plate
2	6	#8 x 1" Zip-R Pan Head Screw	Attach t-track to riser plate
3	6	1/4-20 x 3/4" Flanged Socket Head Screw	Attach fences to t-track and riser plate to channel
4	4	1/4-20 Oval Nut	Nut with flanged screw above

Multi-Angle Work Holder



Content of Router Boss Multi-angle Work Holder Kit Fastener Bag

1	2	10-24 x 1-1/4" Socket Head Screw	Attach cam stops to box sides
2	2	10-24 Square Nut	Nut with socket screw above
3	4	Flanged Bearing for 3/16" Shaft, 5/16" OD	Pivot bearing in alum angle plate & box sides
4	2	3/16" Dowel Pin, 1" Length	Shaft in above flanged bearings
5	2	#10 Flat Washer 0.200" ID, 0.450" OD	Washer on above socket head screws
6	4	#8-32 x 3/8" Flat Socket Head Screw	Attach angle bracket (protractor) to angle plate
7	2	1/4-20 x 1-1/2" Carriage Bolt	Slide in angle brackets and attach to box sides
8	2	1/4" Neoprene Washer 0.75" OD, 0.048" thick	Washer between angle bracket and box sides
9	4	5/16" Plastic Locator Pins	Position work holder on sliding bar & board on plate

